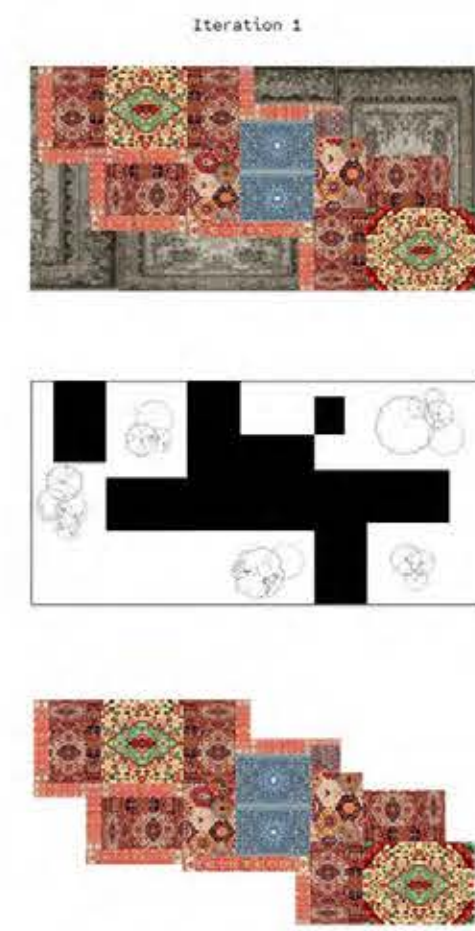


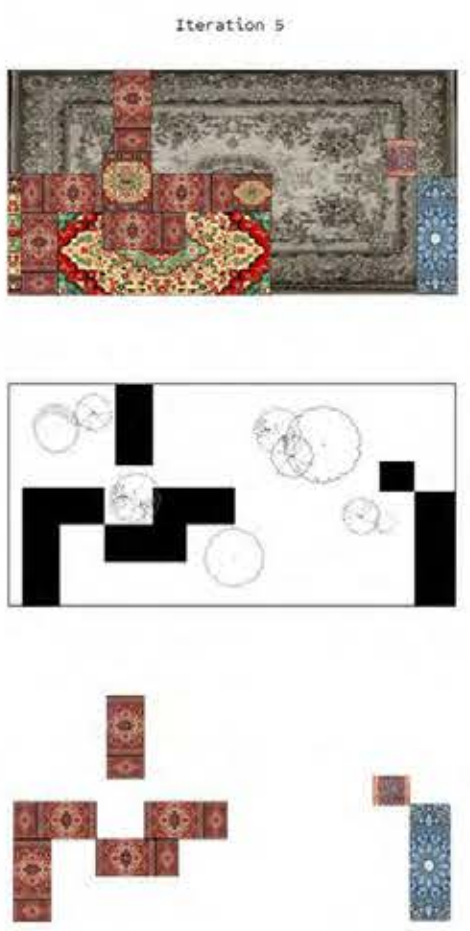


GROUND PLANE ORGANISATION EXPLORATION/STUDY

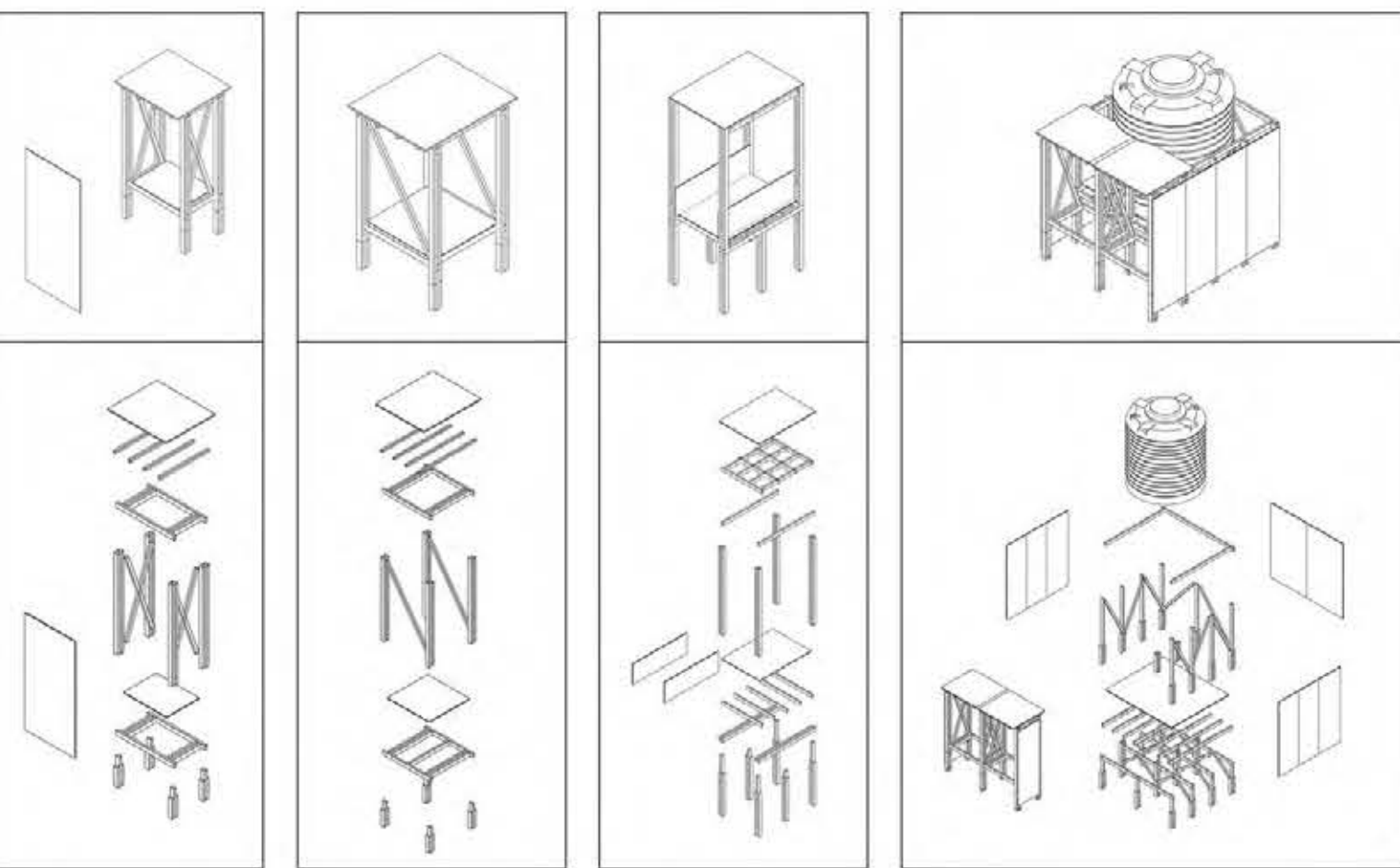
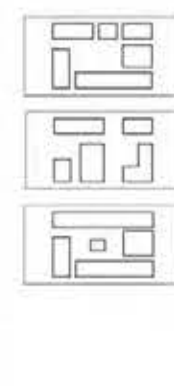
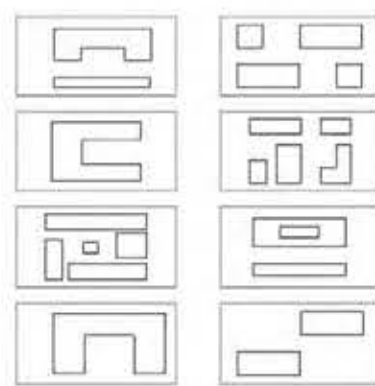
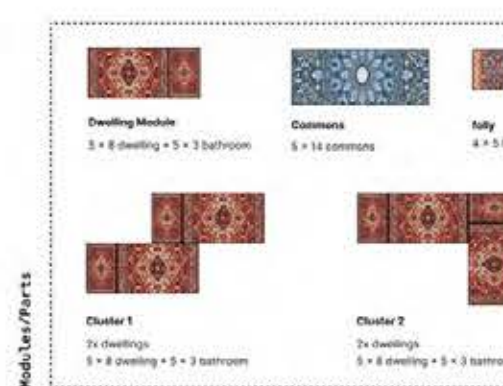
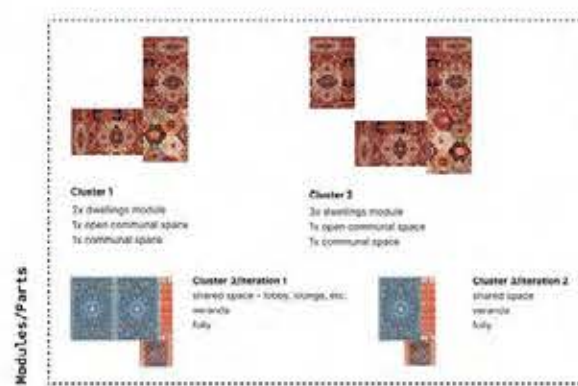
option 1, queenslander



option 2, row house



option 3, moriyana house

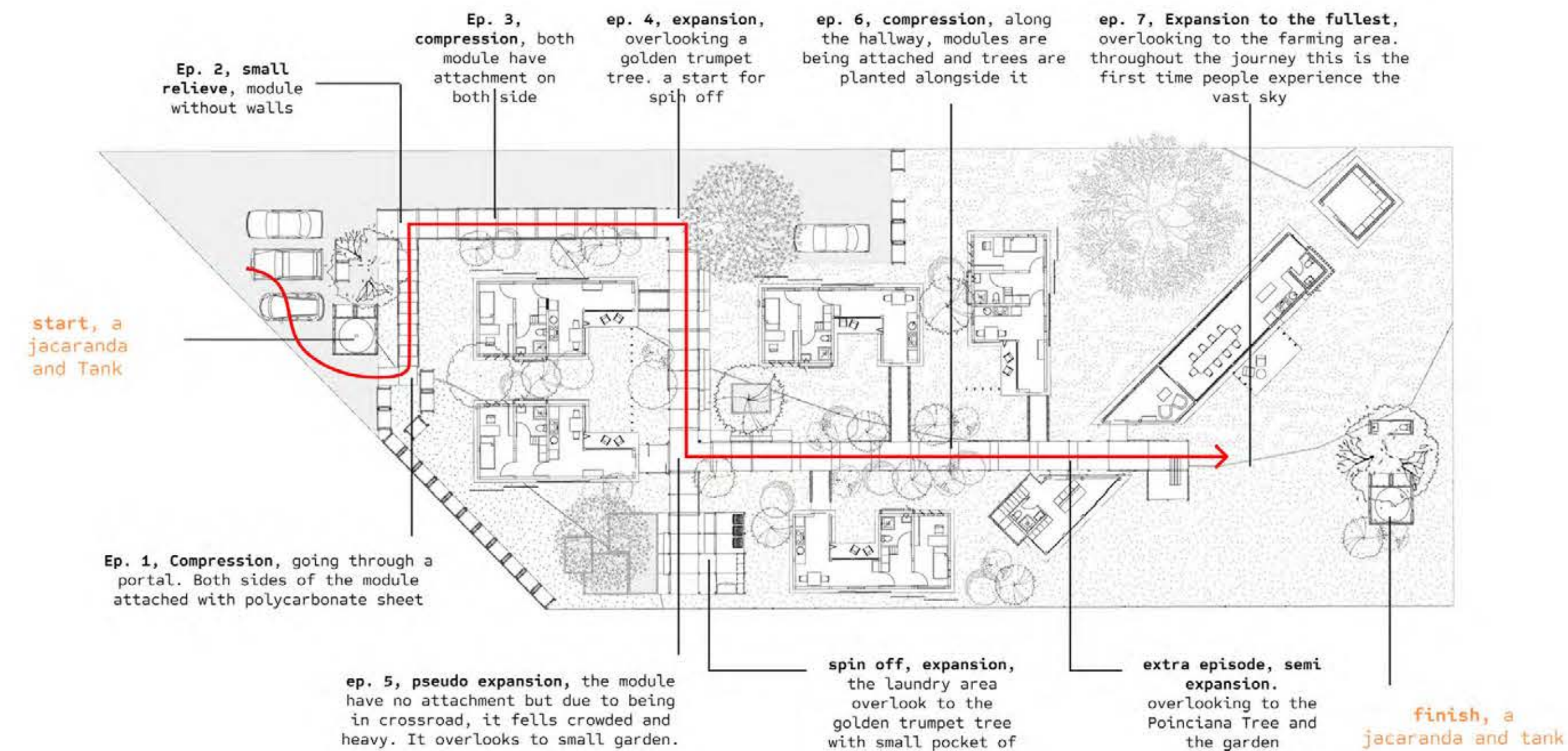
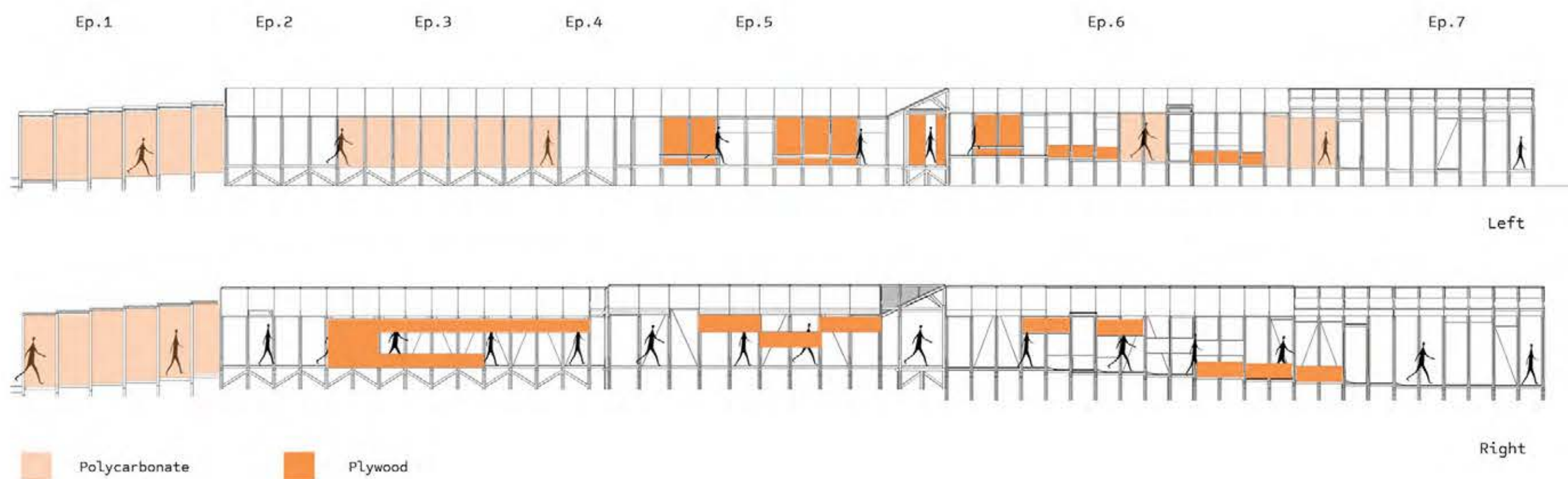
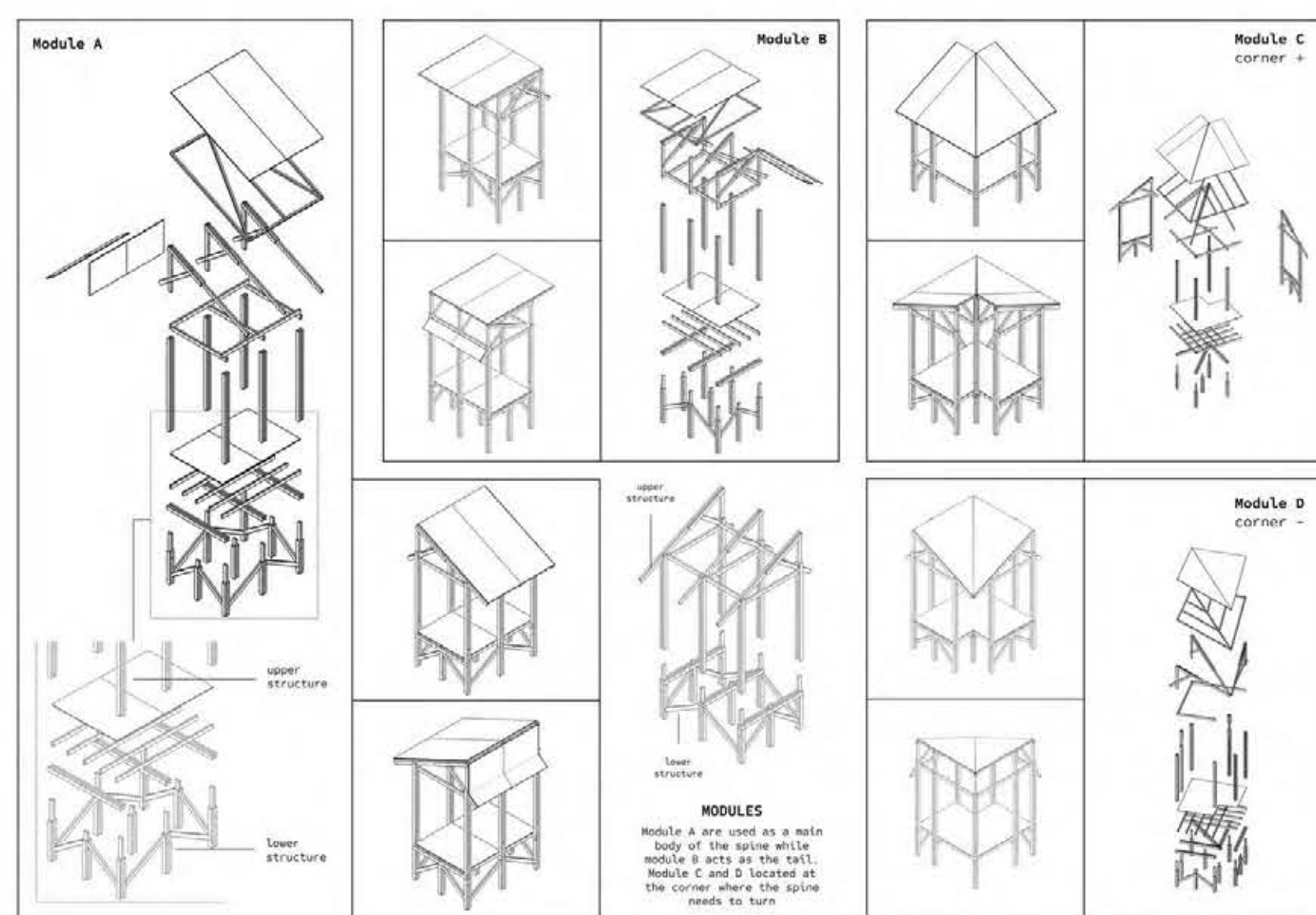


Module E primary act as a boundary. It is mostly used as a fence but also used to create small structure. In the project it is used as a fully part of the water tank and toilet.

Module F are being used as a ramp at the front. It is created because of its dimension that is wide enough for wheelchair user and can be connected to module G.

Module G are created as a threshold space, a in between space connecting the spine to the dwelling.

It's been created from module F then modified to hold weight from the water tank. One of its side consist of module E which can be used for people to sit in hence making the structure functional not only for its technical purpose as a water tank holder but also a structure where people can hang out.



SEQUENTIAL SPATIAL EXPERIENCE

